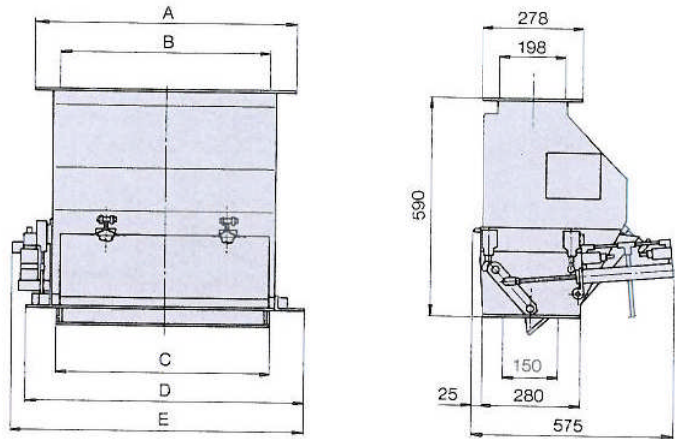


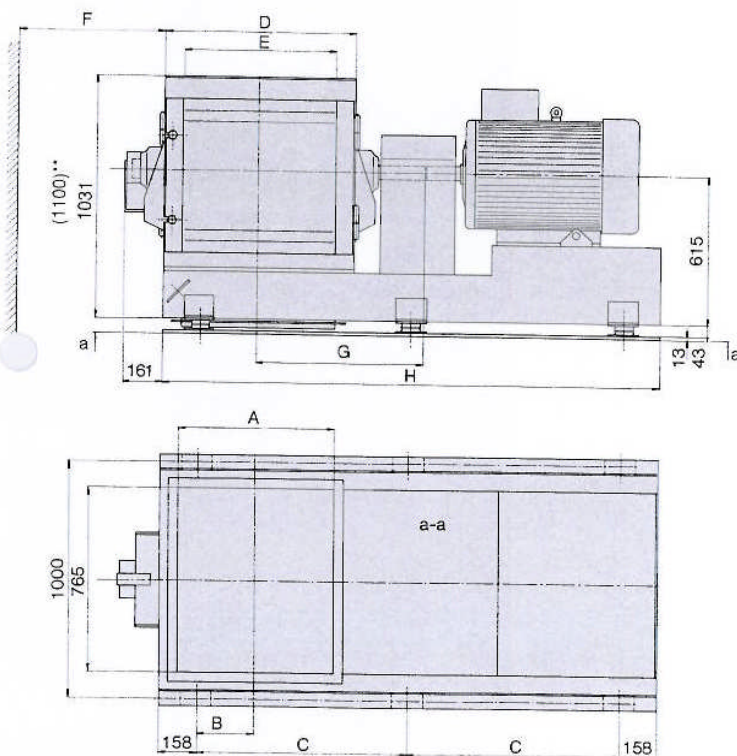
# JLTIMILL TIL TRADITIONELLE OG SPECIELLE

## MÅLSKITSE SEPARATOR

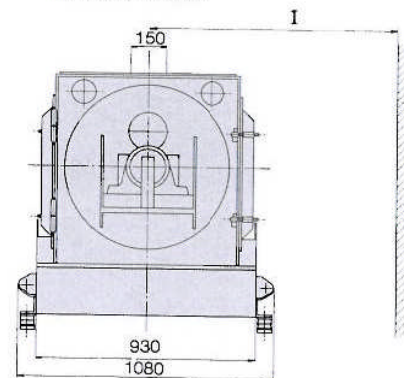
Separator type	A	B	C	D	E	Vægt kg
650/315	416	315	315	493	525	75
650/450	551	450	450	628	660	82
650/630	706	600	600	778	810	91
650/800	901	800	800	978	1010	100
650/1000	1101	1000	1000	1178	1210	110



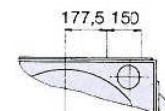
## MÅLSKITSE MULTIMILL



Radielt indløb



Tangentielt indløb



\*\*Type 650/1000

Mølle type	Soldareal dm <sup>2</sup>	Slagle antal	A	B	C	D	E	F	G	H	I	Vægt excl. motor kg	Rumfang søemb. m <sup>3</sup>
650/315	41	26	328	89	640	487	327	305	548	1596	885	1040	2.7
650/450	60	34	463	156	720	622	462	440	615	1756	1020	1150	3.0
650/630	83	50	643	246	895	802	642	620	705	2106	1200	1290	3.3
650/800	106	62	814	331	<sup>665, 610</sup> 655	972	812	790	770	2256	1370	1410	3.75
650/1000	133	74	1061	468	<sup>862, 905</sup> 842	1251	1039	990	875	2625	1000	2265	4.40